

# THE LOST



**In** World Missions, we believe to be successful in reaching the Lost, we must understand who the Lost are. The Lost are defined as “a group of people set apart by language or culture who are generally less than 2% Christian and lack the ability and resources to evangelize each other.” Most have never heard the name of Jesus Christ, have no access to a Bible, nor have they heard the salvation story.

In Luke 15:3-7, the Scripture reads,

*Then Jesus told them this parable: “Suppose one of you has a hundred sheep and loses one of them. Doesn’t he leave the ninety-nine in the open country and go after the Lost sheep until he finds it? And when he finds it, he joyfully puts it on his shoulders and goes home. Then he calls his friends and neighbors together and says, ‘Rejoice with me; I have found my Lost sheep.’ I tell you that in the same way there will be more rejoicing in heaven over one sinner who repents than over ninety-nine righteous persons who do not need to repent.”*

In the western church, it is easy for us to sit in our beautiful sanctuaries and places of worship, and at the same time imagine who the Lost actually are. For example in Africa there are 418,869,000 people Lost without hope; in Asia 2,900,179,000 people who are Lost and searching for hope and happiness; in Europe there are 29,503,000 people who are Lost and desperately need to hear the life-giving message of Jesus Christ; in Latin America there are 687,000 people who are Lost and in desperate need of His mercy and grace; in North America (including Central America) there are 18,132,000 people who are Lost without God and thereby without hope. These numbers total

3,367,370,000 people Lost! This total number is changing daily, and is very difficult for us in the western church to hear, embrace, or even imagine.

Jesus came to reach and rescue the Lost of humanity. *Luke 19:10: “For the Son of Man came to seek and to save the lost.”* Reaching the Lost of humanity cannot happen without action. He came to seek them, to go after the Lost and we are called to do the same. If we, as believers, desire to follow the example of Christ we must take action. As we partner together to reach the Lost there are two action steps to be taken.

First, pray. In Matthew 9:38 we see the Lord share with his disciples, *“The harvest is plentiful, but the laborers are few; therefore pray earnestly to the Lord of the harvest to send out laborers into his harvest.”* If we are to reach the Lost of humanity, we must maintain a posture of prayer.

Church of God World Missions has focused heavily on prayer since the beginning of our 365 Challenge and we believe that as a result, we are seeing a harvest unlike never before. Prayer absolutely changes things! General Director, M. Thomas Propes, often says, “One touch of God’s favor changes everything. It changes

**IF WE, AS BELIEVERS, DESIRE  
TO FOLLOW THE EXAMPLE  
OF CHRIST, WE MUST  
TAKE ACTION.**

LUKE 19:10

# FOR THE SON OF MAN CAME TO SEEK AND TO SAVE THE LOST

the atmosphere. It changes the diagnoses. It changes family situations. It changes health issues. It changes marital issues. It changes financial difficulties. It changes everything!" As the Church of God continues to join the World Missions family in praying daily for the favor of God to rest upon what we do globally, we believe we will continue to experience tremendous spiritual success in reaching this last day harvest.

Second, partner with us. Whether it's providing clean water or helping with recovery following a natural disaster, when you partner with World Missions financially, your gift allows us to equip our personnel with the resources to meet material and physical needs around the world. As always, please remember, one hundred percent of your financial gift is used directly on the mission field.

These action steps are simple...Pray and Partner. Who will pray? Who will partner? These are the laborers referenced in Matthew 9:38. Prayer partners are vital to the completion of the Great Commission. Prayer groups earnestly seeking God's face for the Lost of humanity, break through and break down spiritual strongholds. *"The weapons we fight with are not the weapons of the world. On the contrary, they have divine power to demolish strongholds. We demolish arguments and every pretension that sets itself up against the knowledge of God, and we take captive every thought to make it obedient to Christ."* (2 Corinthians 10:4-5). People ask us, "Exactly what is the 365 Challenge?" It is this simple: We are asking the Church of God as a denomination, to be laser focused in prayer for what World Missions is doing globally. Can you imagine what could really happen if the 8,177,349 members in the Church of God would pray for 3 – 5 minutes each day for this vital ministry to succeed? Can you imagine what would really happen? Can you dream that kind of dream? Pray...

Partners. What does that really mean? Partnership can

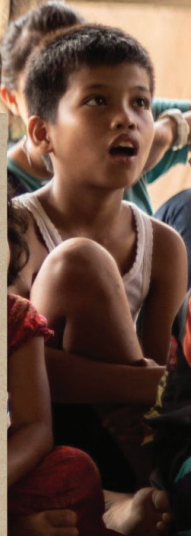
be in two ways. They can physically go with our teams to the mission field. They can join with our missionaries in country, and literally become the hands and feet of our risen Savior to the world. People often ask, "What would Jesus do?" To answer that, let's look at what Jesus did. He gave water to the thirsty. He healed the sick. He fed the hungry. He rescued Lost humanity. That's what a partner can do.

There is a second way that you can partner with Church of God World Missions. If you cannot go, you can send. We have teams ready to go to the field. We are raising money every day to help support their efforts to get to the field.

Not only do we support our global action teams, but we support our missionaries as well. Our missionaries typically leave the land of their birth and go to foreign soil to serve out their calling. He or she enters a culture and begins to share the good news of Jesus Christ. Additionally, we may think of an evangelist or a preacher, who travels the world sharing God's message of hope to large crowds in conference centers or arenas. These examples of laborers are all needed and extremely effective to finish the Great Commission. However, World Missions sees many more opportunities for laborers on the mission field. The research tells us that an estimated 70,749 laborers are needed to complete the Great Commission.

## **HOW CAN ONE BECOME A LABORER AND A PARTNER WITH WORLD MISSIONS?**

To a young child or student interested in missions, we recommend starting where you are. If you play sports, share His love and kindness to your teammates. If you are in the arts, share His hope of eternal life to fellow musicians, actors, and artists. Whomever you find in your sphere of influence, begin there. This action in obedience grows your boldness in sharing the message of Christ.



To a college student interested in missions, we recommend electives in languages or cultural studies to broaden your understanding of the world. Read about different cultures. Take an international trip, start a Bible study, or prayer meeting on campus. Most of all, hone your God-given skills for His glory.

We find that learning to build relationships is a vital tool on the mission field. The art of meeting people and getting them to talk about themselves, their dreams, goals, and aspirations will open the door for you to share Jesus. The foundation of trust is important not only as you prepare to share the gift of salvation, but also in the journey of discipling a new convert. Trust is formed through consistency. It takes time to build these relationships, but the reward of patience in the process is life changing for both parties.

***A PRESENT-DAY MISSIONARY CAN BE ANY OF THE FOLLOWING:***

- an instructor of various topics
- a physician
- an office worker
- a graphic designer
- a music teacher
- a nurse
- a videographer
- a preacher
- a church planter
- a construction worker
- an athletic coach
- a chef
- a vocational coach
- a mental health worker
- a caregiver
- a farmer
- an architect
- and so much more

**TEXT CHALLENGE TO 801801**

**Mail: PO Box 8016  
Cleveland, TN 37320**

**[www.cogwm.org/give](http://www.cogwm.org/give)**

As Ecclesiastes 9:10 says, *“Whatever your hand finds to do, do it with all your might...”*

As we have noted, one may say, “But I cannot go.” Many times there are hindrances and obstacles which prevent one from actually going to the mission field. The call of God to “go into all the world” is not limited to traveling and does not leave any one excluded. The call is so large, and so inclusive, that everyone can participate. One may pray, encourage, financially support, assist with travel arrangements, organize fundraisers, pack supplies, volunteer in their local church, state office, or international offices, babysit a missionary’s child while they are home, tutor a missionary’s child, teach children about missions, work the exhibit booth at General Assembly, assist in preparing newsletters, and many other opportunities. No task is too small or too large when we all come together and do our part.

As we set our minds and hearts on the Lost through prayer and partnership, God will honor our obedience to His command. There is no higher calling, no greater honor, and no greater reward.

Will you take the 365 Challenge? Will you pray? Will you partner with us? Will you do what your hands find to do? The Lost need you. The Great Commission is a command to ALL – no one is excluded. Let us go after them...the Lost, with all of our might!

# WHAT'S *Happening*

IN COG WORLD MISSIONS?

Changing our world... one day at a time

## OTHER UPCOMING 2023 EVENTS

- JULY 6-9 | JAMAICAN NATIONAL CONVENTION
- JULY 19-23 | CARIBBEAN ASSEMBLY (BARBADOS)
- JULY 26-28 | COG PHILIPPINES NATIONAL CONVENTION
- AUG 22-24 | PRAY AFRICA CONGRESS (LUSAKA ZAMBIA)
- AUG 22-25 | INDONESIA SYNOD
- AUG 30-SEP 3 | FIJI NATIONAL CONVENTION



365 YEAR  
END REVIEW  
(FACEBOOK LIVE)

2023  
**SEP  
12**



EMERGING  
LEADERS  
MISSIONS TRIP

2023  
**OCT  
1-7**



PASTORS  
COALITION  
(FREEHOLD, NJ)

2023  
**OCT  
2-3**



PASTORS  
COALITION  
(WEATHERFORD, TX)

2023  
**OCT  
16-17**



RIDE 4 HOPE  
(WESTERN  
N. CAROLINA)

2023  
**OCT  
20-22**



MEDICAL  
MISSIONS  
TRAINING  
(CLEVELAND, TN)

2023  
**NOV  
3-5**



PASTORS  
COALITION  
(FOUNTAIN VALLEY, CA)

2024  
**FEB  
19-20**



PASTORS  
COALITION  
(CLEVELAND, TN)

2024  
**MAR  
18-19**



EMERGING  
LEADERS  
MISSIONS TRIP

2024  
**JUNE  
2-9**



EMERGING  
LEADERS  
MISSIONS TRIP

2024  
**JULY  
21-28**

P.O. BOX 8016  
CLEVELAND, TN 37320  
1.800.345.7492



**M. THOMAS PROPES**  
GENERAL DIRECTOR  
WORLD MISSIONS



**JOHN D. CHILDERS**  
ASSISTANT DIRECTOR  
WORLD MISSIONS